

TACT

Membership Application Process

Group Leaders' Meeting
WCLC 2015
6th September 2015

Overview

- Draft membership policy
- Membership Working Group
- Membership criteria
- Review and approval process

Draft membership policy

- Outlines rights and requirements of TACT membership; and the process for review and approval of membership applications
- Two phases
 - Interim arrangements – to enable formation of the group
 - Membership Working Group and Board
 - Future arrangements – to guide growth and establishment of the General Assembly
 - Membership Committee and Board

Membership working group

- Two Board members (one appointed as Chair)
 - One additional member
 - Executive Officer
-
- The Working Group will transition in three years to a standing Membership Committee
 - Past President/s
 - Immediate Past President as Chair
 - One additional member
 - Executive Officer

Function

- The Membership Working Group is responsible for
 - Reviewing and recommending approval of membership applications
 - Reviewing membership criteria and application process and recommending changes to the Board
 - Monitoring compliance with requirements of ongoing membership
 - Maintaining a record of applications, their outcome and a register of approved members
 - Developing the final Membership Policy in collaboration with the Board
 - Presenting to the General Assembly for approval

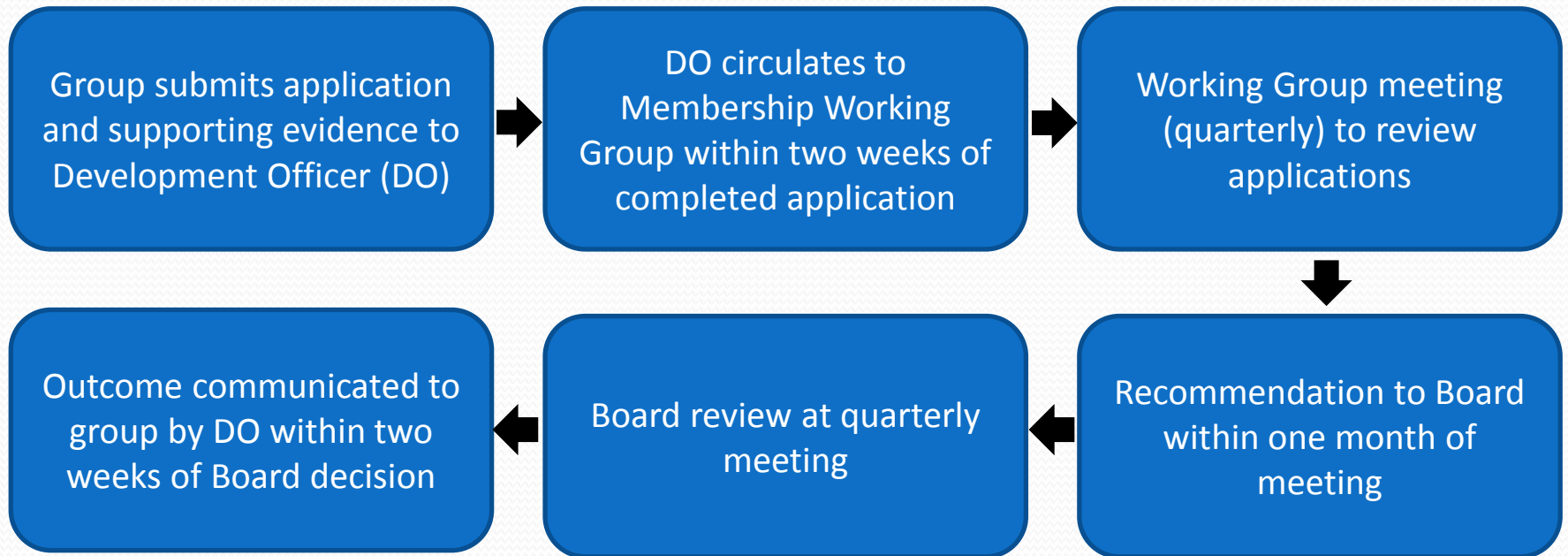
Membership categories

- Full membership: groups whose activities are closely aligned with TACT aims; not open to individual researchers or hospitals
 - Cooperative thoracic oncology or oncology groups who conduct clinical trials
 - Includes national and trans-national groups
- Applications that do not qualify for full membership will be considered on a case by case basis
 - May be awarded provisional membership or observer (non-voting) status
 - Oncology research groups not directly involved in running trials
 - Consumers, laboratory-based research groups, regulatory authorities or commercial organisation

Industry partners

- Commercial organisations with an interest in contributing to or supporting TACT will be registered as industry partners
 - Limited representation at open meetings
 - Non-voting status

Review and approval



Membership criteria

1. Ongoing trial or trials in thoracic cancer at the time of application
 2. Have conducted, or is able to conduct, randomised therapeutic clinical trials in thoracic cancer under GCP conditions
 3. Have access to a central data centre
 4. Have access to statistical support
 5. Have completed at least one Phase 3 therapeutic trial or large Phase 2 therapeutic trial in thoracic cancer in the last five years, either as a group or as part of an intergroup collaboration
 6. Willing to attend general meetings of TACT and actively participate in Standing Committees and/or Working Groups
- } Within the group or through a provider

Dues

- Members of TACT will be invoiced for the amount of AU\$2,000 annually

Rights and responsibilities of membership

- Member groups have one vote on matters arising at meetings of the General Assembly and may appoint up to six representatives to attend:
 - Three principal representatives
 - One statistician
 - One data manager/operations expert
 - One translational research representative
- Observer groups have no voting rights
 - One representative to attend General Assembly
 - May be invited to take up observer status on a Standing Committee or Working Group

Next steps

- Application forms available after WCLC
 - Contact the Development Officer for an electronic copy
 - rosalind@lungfoundation.com.au
 - Will be available at www.TACTlung.com in future